



Report on A two Day International Webinar on Inter- Disciplinary Covid19 Pandemic Research

20th and 21st September 2021

Organised by Research and Consultancy
Cell in collaboration with IQAC, Govt
Hrangbana College

REPORT ON

**A TWO DAY INTERNATIONAL
WEBINAR ON INTER-DISCIPLINARY
COVID- 19 PANDEMIC RESEARCH**

A. Organised by: Research and Consultancy Cell and IQAC, Govt Hrangbana College via Zoom.

B. Duration of the Programme: 2 Days (21st and 22nd September, 2021, 7:30 p.m -9:00 p.m)

C. Backdrop: In order to make the programme a reality the Research and Consultancy Cell has had numerous committees and resolved on matters in regards to the two day international webinar. Multiple paper presenters will be allowed for all the ten departments and subject expert who will be expected to give a brief comment on the presented paper will either be assigned from the concerned department or from outside the institution depending on the convenience or availability of such expert(s).

D. Number of Participants: 297

E. Keynote Speaker: Rev Prof Lalsangkima Pachuau, John Wesley Beeson Professor of Christian Mission and Dean of Advanced Research Programs at the Asbury Theology Seminary, Kentucky, USA. He has served as a scholar-in – residence at the Crowther Centre for Mission Education, Church Mission Society (Oxford, UK), and lectured in various institutions and universities in the United Kingdom. A member of the Center of Theological Inquiry (Princeton, New Jersey) where he served as a research scholar in 2004- 05 and has published numerous articles, authored and edited several books including *Ethnic Identity and Christianity* (Peter Lang, 2002) and *News of Boundless Riches* (CTI and ISPCK, 2007).

F. The Programme at a Glance:

Day 1

21st September 2021, 7:30 p.m

Chairperson: Dr Lalbiakzuali, Coordinator IQAC

Keynote Speaker: Revd Prof. Lalsangkima Pachuau

1. Dept of Public Administration

Topic: The Working of the Department of Disaster Management and Rehabilitation in Relation to Covid-19 Pandemic with Special Reference to Aizawl District.

Speaker: Dr. Malsawmi Pachuau

Subject Expert: Dr. H. Lalzidinga, HoD Dept of Public Administration

2. Dept of Psychology

Topic: Impact of Covid-19 Pandemic on Mental Health among the Mizo People.

Speaker: Dr. Juliet Lalremmawii Ralte and Dr. Zothanzami

Subject Expert: C. Lalfamkima, Prof, Dept of Psychology, MZU

3. Dept of Political Science

Topic: Election in a Pandemic: The Challenges of Conducting Election during Pandemic in Mizoram.

Speaker: Dr. H. Lalzuithangi

Subject Expert: Malsawmzuala, MCS, Govt of Mizoram

4. Dept of Mizo

A Study of Covid-19 Pandemic Impact on Mizo Literature.

Speaker: V. Lalberkhawpuimawia

Subject Expert: Dr. Darchuailova Renthlei, HoD Dept of Mizo

5. Dept of History

Topic: A Brief History of Epidemics, Compilation of Documents and Impact of Covid-19 in Mizoram from March 2020- March 2021.

Speaker: Dr. Rosaline Varsangzuali and Dr. Robert Lalremtluanga Ralte

Subject Expert: Ngurthankima Sailo, HoD Dept of History

Vote of Thanks: Dr H. Lalzuithangi (Member, Research and Consultancy Cell)

Day 2
22nd September 2021, 7:30 p.m
Chairperson: Prof. Sanny Tochwawng, Chairman,
Research and Consultancy Cell

1. Dept of Geography

Topic: Analysis of Covid-19 in India: A Geographical Perspective.

Speaker: Ramengmawii

Subject Expert: C. Lalhumbika, Asso Prof, Dept of Geography

2. Dept of English

Topic: Online Teaching: Problems and Challenges Faced by College Teachers Due to Covid-19 Pandemic.

Speaker: Dr. C. Lalrinfeli

Subject Expert: Zampuii Khiangte, HoD Dept of English

3. Dept of Education

Topic: Online Teaching: Perceptions and Challenges of Stakeholders of Govt Hrangbana College- A Case Study.

Speaker: Dr. Lalhlimpuii

Subject Expert: Dr. Lalsangliani, Asso Prof, Dept of Education

4. Dept of Economics

Topic: Economic Analysis of Covid-19 Impact on Informal Sector, Aizawl, Mizoram.

Speaker: Dr. C. Lalnunmawia

Subject Expert: Dr. James L.T Thanga, Asso Prof, Dept of Economics, MZU

5. Dept of Commerce

Topic: Impact of Covid-19 Pandemic on Consumer's Buying Behaviour with Special Reference to Youth in Mizoram.

Speaker: Dr. Lalnunpuia Sailo, Dr. Binod Murmu.

Subject Expert: Prof. Kalyan Adak, HoD Dept of Commerce

Vote of Thanks: Dr. Zothanzami (Member, Research and Consultancy Cell)

G. Context of the Webinar: The webinar is an attempt to study the effect of Covid-19 Pandemic in Mizoram from different disciplines. The interdisciplinary research was put together by a team of dedicated faculty members and student researchers from each department.

i) The department of Public Administration has made a remarkable research on the working of the Department of Disaster Management and Rehabilitation for Covid-19 Pandemic and its collaboration with the health and police department and the problems and challenges faced.

ii) The department of Psychology aims to examine the nature of mental health condition of the Mizo people during the Pandemic.

iii) The department of Political Science looks into the roles and functions of administrators, the government and civil societies working together harmoniously to conduct an election during the Pandemic.

iv) The department of Mizo attempts to highlight the impact of Covid-19 Pandemic on Mizo literature.

v) The department of History attempts to highlight some of the indigenous knowledge practiced by the Mizos in the past in order to combat the epidemic and the relevance of those practices in today.

vi) The department of Geography have conducted a national level research on the state wise performance on Covid-19 Pandemic and their correlation with physiographic divisions of each state and UTs.

vii)The department of English aims to study the problems and challenges faced by college teachers during the pandemic and how they handle the sudden need to learn digital technology and the new methodology of teaching.

viii)The department of Education looks into the perceptions and challenges faced by academic stakeholders specifically the college community brought about by the Covid-19 Pandemic.

ix)The department of Economics presents the study on the impact of Covid-19 Pandemic on the informal sector with special reference to informal workers in Aizawl.

x) The department of Commerce has made an attempt to study the effect of the Covid -19 Pandemic on the consumer's buying behaviour, impact on manufacturers, entrepreneurs, businessmen and government officials in coping with the pandemic.

H. Outcome of the Webinar: The webinar has brought together interdisciplinary reflections dealing with the Covid-19 pandemic. In spite of the shortcomings

of numerous social behaviours and failures of government departments social amenability have saved numerous lives during the Pandemic. Until Covid-19 vaccines are discovered the latest approach is to manage it instead of eliminating it. The webinar instilled a mindset where all have to continuously live and make necessary adjustments with a drive for constant innovation. The papers presented in the webinar were made into a book form and published as an original publication of Govt Hrangbana College.

I. Glimpse of the Webinar:

Dr. Lalbiakzuali, Coordinator IQAC



**International Webinar On
Inter-Disciplinary Covid-19 Pande...**

Revd. Prof. Lalsangkima Pachuau



Dept of Public Administration



International Webinar On
Inter-Disciplinary Covid-19 Pande...

Dept of Psychology



**International Webinar On
Inter-Disciplinary Covid-19 Pande...**



**International Webinar On
Inter-Disciplinary Covid-19 Pande...**

Dept of Political Science



**International Webinar On
Inter-Disciplinary Covid-19 Pande...**

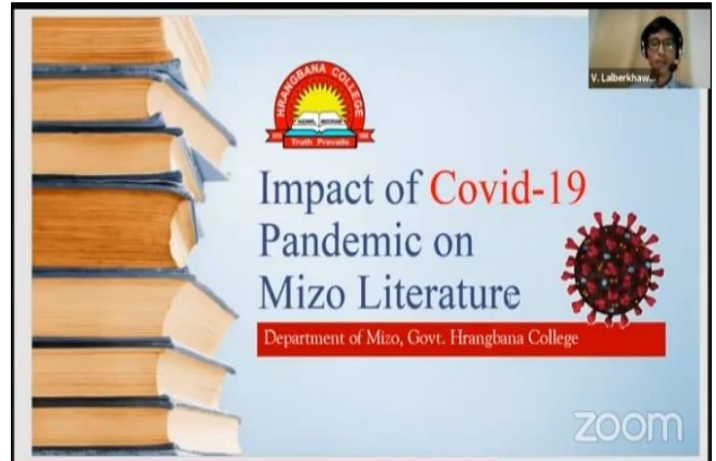


**International Webinar On
Inter-Disciplinary Covid-19 Pande...**

Dept of Mizo



International Webinar On
Inter-Disciplinary Covid-19 Pande...



International Webinar On
Inter-Disciplinary Covid-19 Pande...

Dept of History



International Webinar On
Inter-Disciplinary Covid-19 Pande...



International Webinar On
Inter-Disciplinary Covid-19 Pande...

Dept of Geography



Least affected States and UT's

Least Affected States with huge demographic profile

State/UT	2019	2018	2017
West Bengal	101719	101719	101719
West Bengal	101719	101719	101719
West Bengal	101719	101719	101719
West Bengal	101719	101719	101719
West Bengal	101719	101719	101719

Least Affected States

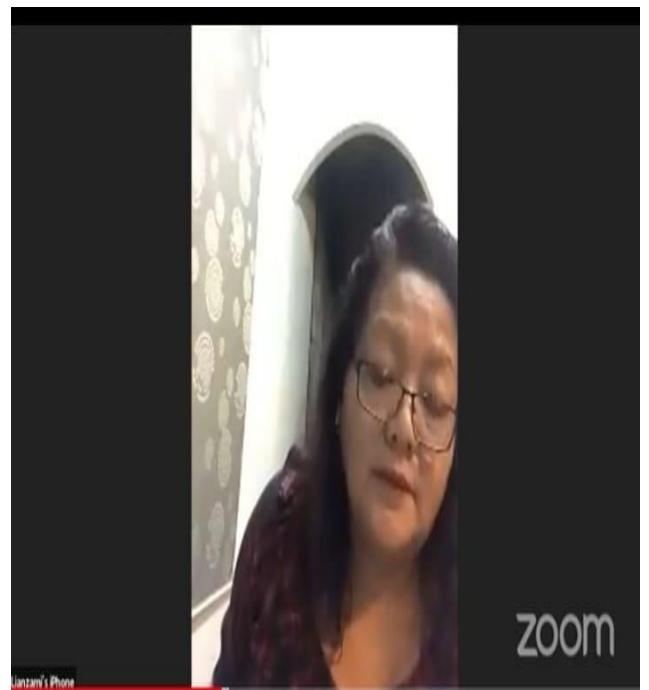
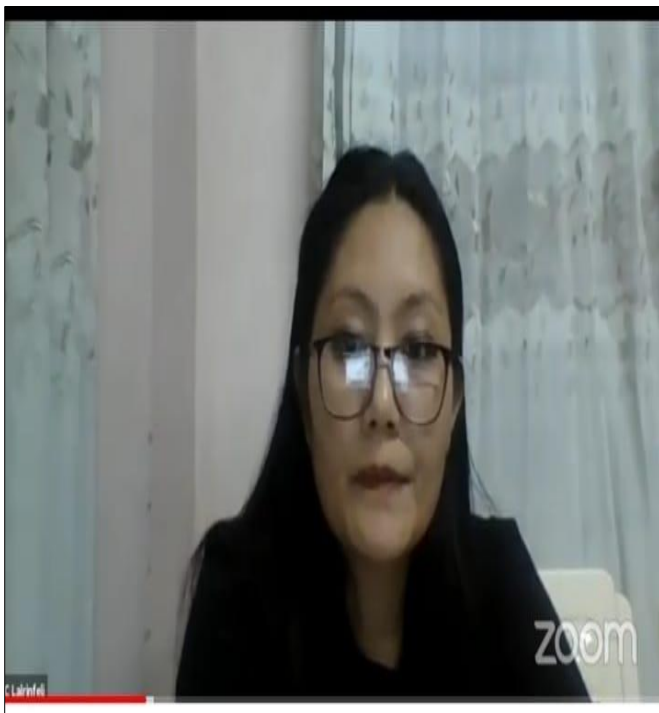
State	2019	2018	2017
1	101719	101719	101719
2	101719	101719	101719
3	101719	101719	101719

Least Affected UT's

UT	2019	2018	2017
1	101719	101719	101719
2	101719	101719	101719
3	101719	101719	101719

Zoom logo and name 'Ram Engmawi' are visible in the bottom right and left corners respectively.

Dept of English



Dept of Education



Major Findings Relating to Parents' Economic Status

Sl.No.	Questions/Items	Responses	Percentage
1.	Family Status	APL	60
		BPL	27
		AYY	13
		Government Service	41
2.	Sources of Income	Business	15
		Employed in private firms	4
		Daily wage earners	38
		Retirement funds	1
		Others	1
3.	Number of family members	3-5 members	22
		6-8 members	70
		More than 8 members	7
		3 Earning family members	86
4.	Number of earning family members	5 Earning family members	10
		More than 5 Earning family members	3

Dept of Economics

Table 4: Analysis of Average Monthly Expenditure and Paired Sample T Test

Expenditure Items	Pre-Covid Mean Exp	Post-Covid Mean Exp	% change (Reduction)	T-Test Statistic	Degree of Freedom	Significance (2-tailed)
Food	8723.96	8026.04	-8	4.57***	95	0.000
UPI	1180.77	1180.77	0	1.01	95	0.318
App	4122.86	4108.18	-1.01	0.01	95	0.114
Electricity and Water	1018.61	894.20	-11.8	1.33	95	0.187
Education	2285.42	1471.88	-35.60	4.91***	95	0.000
Medical	1020.21	1049.78	2.98	0.01	95	0.142
Shopping	1326.33	539.58	-59.32	9.08***	95	0.000
Other bills	1016.04	831.46	-18.17	1.94**	95	0.054
Transportation	976.35	546.88	-43.99	5.13***	95	0.000
Miscellaneous	1763.54	2718.02	27.23	5.41***	95	0.000
All Expenditure	23416.84	19602.47	-16.62	9.17***	95	0.000

Source: Own Calculations from Field Survey, 2021
 *** is significant at the 0.01 level (2-tailed)
 ** is significant at the 0.05 level (2-tailed)



Dept of Commerce



□ The study also concluded that there was a visible change in the mode of payment with digital payment gaining popularity.

Among the digital payment mode, G-pay was the most preferable mode of payment followed by Paytm.

This indicates that third party apps are more popular than Internet Banking offered by various banks for making payments during lockdown.

□ With all these changes brought by the pandemic, it is vital that all those who engage in business needs to understand the consumer preferences and accordingly adjust their strategy and cater to the consumers during pre and post pandemic time.

If these changes due to the pandemic become permanent, it might also be necessary to make adjustments or apply new strategies in order to adapt to the consumer's market.

zoom



Link to the Two Day International Webinar on Inter-Disciplinary Covid19 Pandemic Research on Youtube

Day 1: https://www.youtube.com/live/_surVtX4fPM?feature=share

Day 2: https://www.youtube.com/live/fn_yVtgZWJg?feature=share